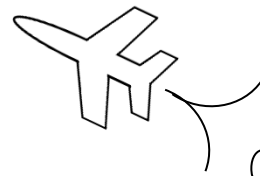




# MAth on the Fly!



NAME: \_\_\_\_\_ DATE: \_\_\_\_\_

## Dividing Polynomials by Monomials

Simplify each expression.

1.

$$\frac{8x^5 - 14x^6}{2x^5}$$

2.

$$\frac{-12x^4 + 6x}{6x^3}$$

3.

$$\frac{-9x^2 - 6x + 1}{9}$$

4.

$$\frac{20x^3 + 10x^2 + 30x}{5x}$$

5.

$$\frac{49x^3 + 28x^2 - 21}{-7x}$$

6.

$$\frac{36x^4 + 8x^3 - 40x^2}{4x^2}$$

7.

$$\frac{8x^3 + 32x^2 - 16x + 4}{8x}$$

8.

$$\frac{21x^4 - 18x^3 - 15x^2 + 9x}{-3x}$$

Get the latest in ACT Math test prep with books, worksheets and more!

<https://www.mathonthefly.com>

## SOLUTIONS

$$\boxed{1.} \quad 4 - 7x$$

$$\boxed{2.} \quad -2x + \frac{1}{x^2}$$

$$\boxed{3.} \quad -x^2 - \frac{2x}{3} + \frac{1}{9}$$

$$\boxed{4.} \quad 4x^2 + 2x + 6$$

$$\boxed{5.} \quad -7x^2 - 4x + \frac{3}{x}$$

$$\boxed{6.} \quad 9x^2 + 2x - 10$$

$$\boxed{7.} \quad x^2 + 4x - 2 + \frac{1}{2x}$$

$$\boxed{8.} \quad -7x^3 + 6x^2 + 5x - 3$$